

Application Note

Model Number: C Plus or C25 HyperTerminal

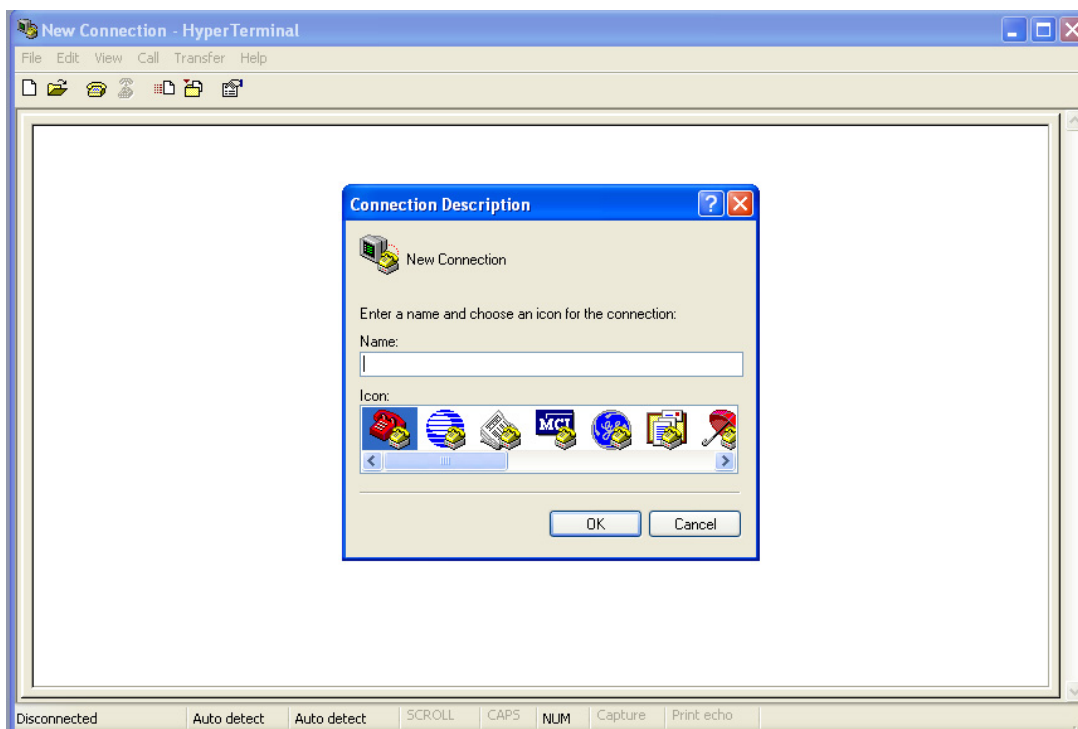
Description: Setting up HyperTerminal to communicate with the C Plus or C25.

HyperTerminal Primer:

From Windows Start menu, go to:

Start > All Programs, Accessories > Communications > HyperTerminal

You will get a window like this:



Give the setup a name and then click OK.

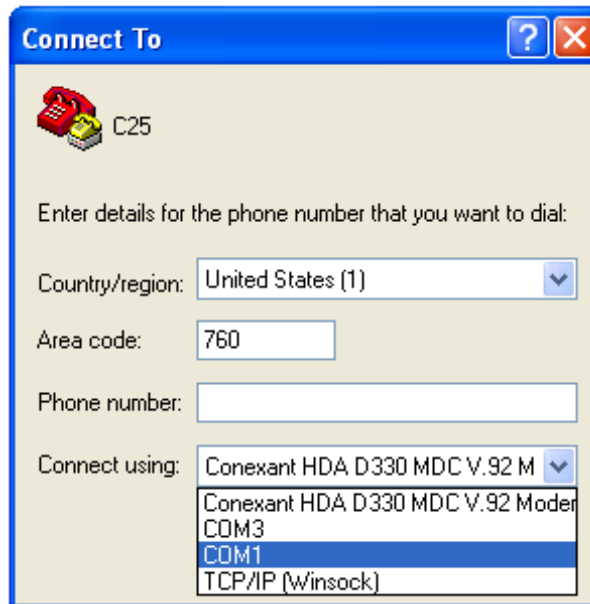
Application Note

Model Number: C Plus or C25 HyperTerminal

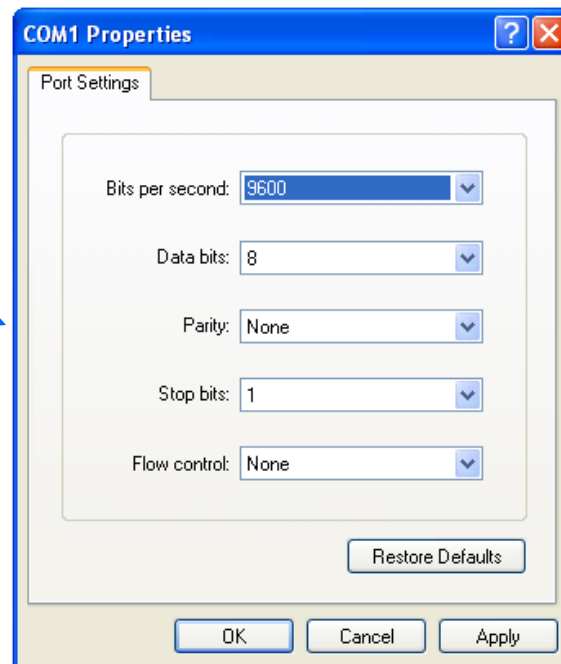
Description: Setting up HyperTerminal to communicate with the C Plus or C25.

HyperTerminal Primer:

Next select COM1 then click OK.



Then make these settings and click OK.



Now you can type \$\$C25 to bring up the main menu of the C25

OR

Now you can type \$\$CPlus to bring up the main menu of the C Plus