

Implementing Unique NYSP Signaling with the QPF-2

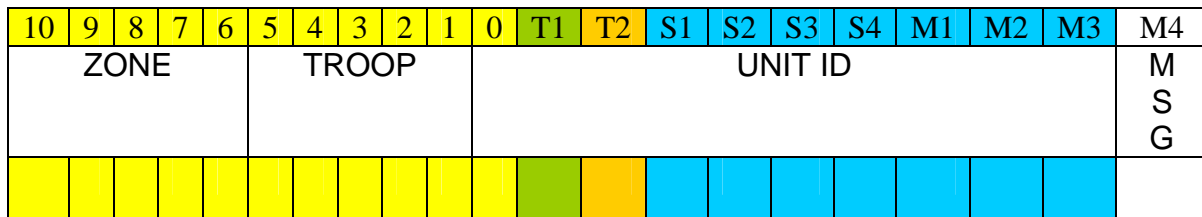


Figure 1

Alpha definitions from bit patterns					
0	00000	B	01011	M	10110
1	00001	C	01100	N	10111
2	00010	D	01101	V	11000
3	00011	E	01110	P	11001
4	00100	F	01111	Q	11010
5	00101	G	10000	R	11011
6	00110	H	10001	S	11100
7	00111	I	10010	T	11101
8	01000	J	10011	X	11110
9	01001	K	10100	Z	11111
A	01010	L	10101		

Table 1

Using the template in Figure 1, enter the desired zone and troop in binary per table 1. Then convert the desired decimal unit ID into binary and enter that – right justified – into the template. The MSG slot of Figure 1 should be a 0 (zero) for PTT ANI and a 1 (one) for Emergency.

Open the ANIPROG programming software and select QE-2. Click on the “Load Defaults” button twice and then select the “Format Options” tab. The window shown in Figure 2 appears (minus the highlighting color).

In the ANIPROG window, select G-Star Format A:Custom and check the box labeled “Enable Manual Editing. Now, from figure 1, take the yellow highlighted bits and convert them to decimal. See figure 2 and enter this decimal value into the yellow highlighted “Unit DI” box of the software.

Following the highlighted colors, enter the value of T1 (green) and T2 (orange) into the software. Do the same with the blue highlighted binary values.

Now, in the right most binary position of the MSG slot of figure 2, enter a 0 (zero) for PTT ANI and a 1 (one) for Emergency.

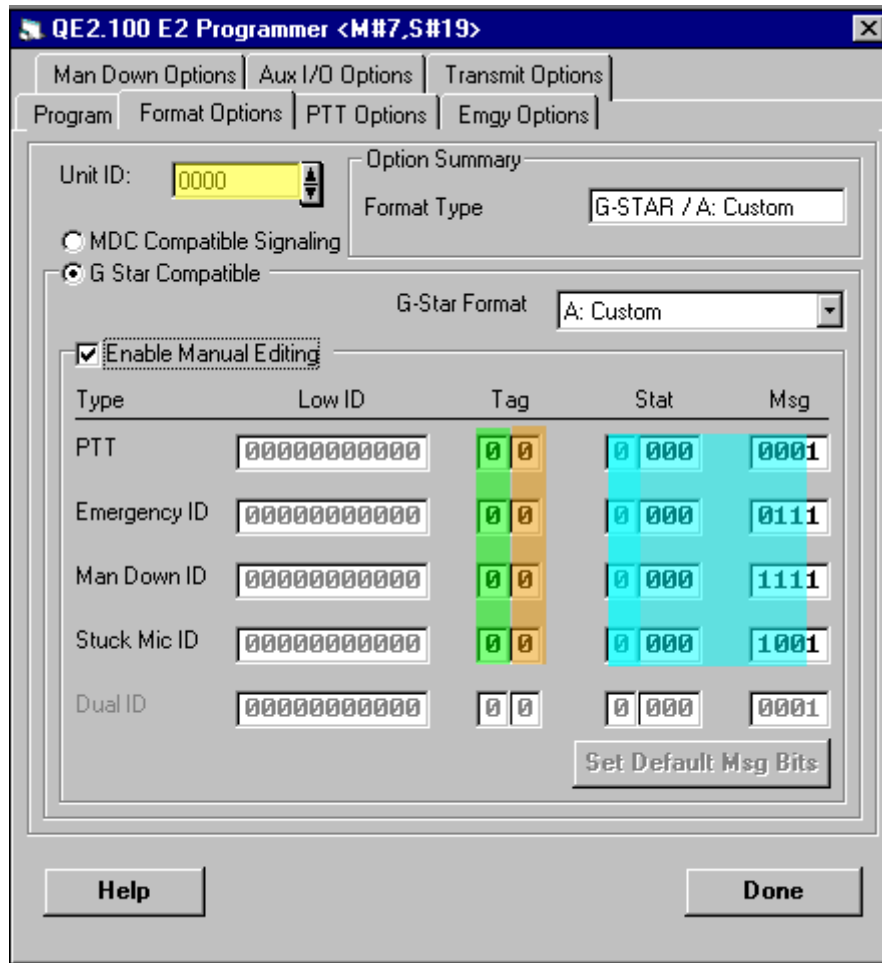


Figure 2

When done, select the "Program" tab and program the QE-2.